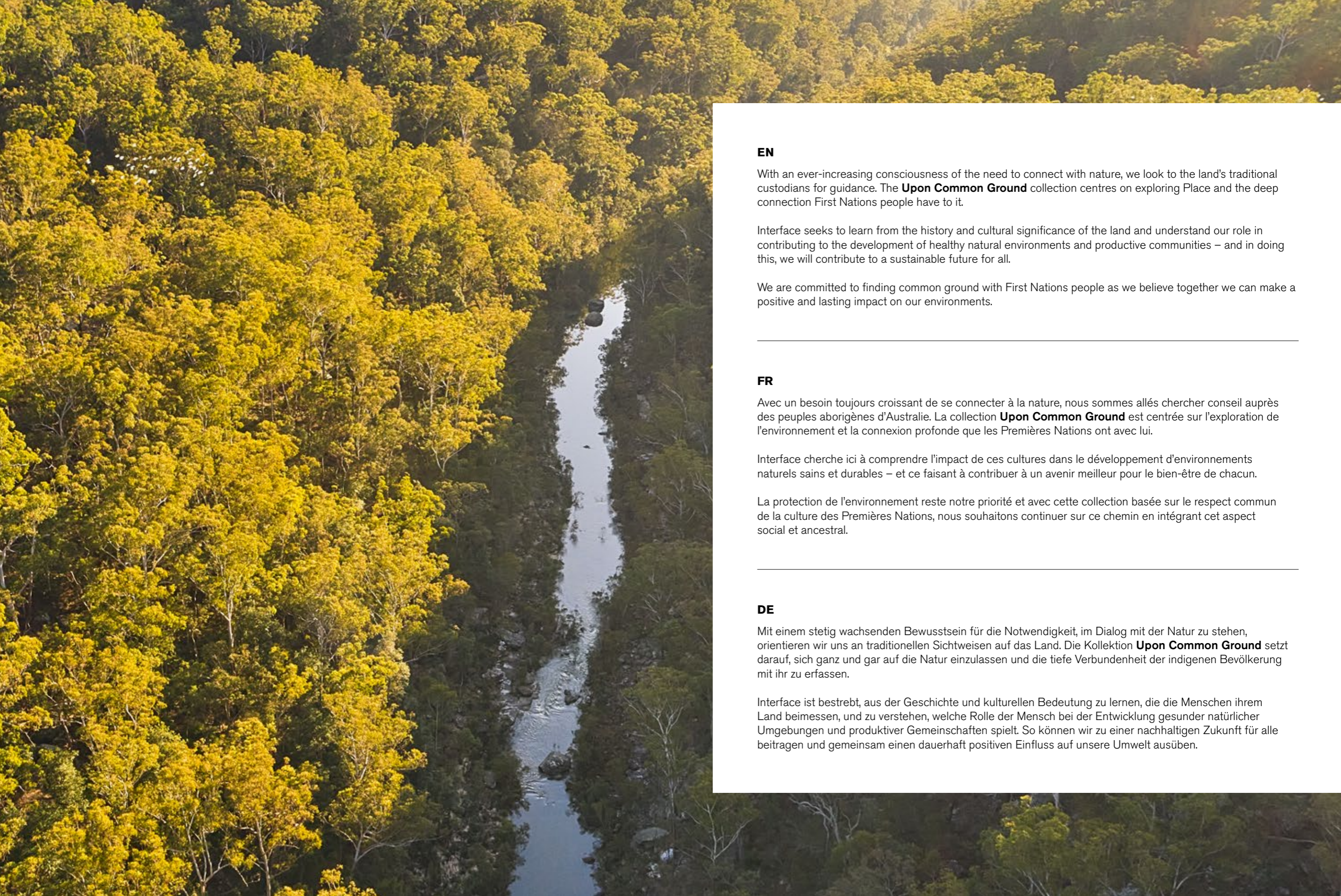




Upon Common Ground

Dry Bark
Escarpment
Sandbank
Shallows
Undulating Water

Interface®



EN

With an ever-increasing consciousness of the need to connect with nature, we look to the land's traditional custodians for guidance. The **Upon Common Ground** collection centres on exploring Place and the deep connection First Nations people have to it.

Interface seeks to learn from the history and cultural significance of the land and understand our role in contributing to the development of healthy natural environments and productive communities – and in doing this, we will contribute to a sustainable future for all.

We are committed to finding common ground with First Nations people as we believe together we can make a positive and lasting impact on our environments.

FR

Avec un besoin toujours croissant de se connecter à la nature, nous sommes allés chercher conseil auprès des peuples aborigènes d'Australie. La collection **Upon Common Ground** est centrée sur l'exploration de l'environnement et la connexion profonde que les Premières Nations ont avec lui.

Interface cherche ici à comprendre l'impact de ces cultures dans le développement d'environnements naturels sains et durables – et ce faisant à contribuer à un avenir meilleur pour le bien-être de chacun.

La protection de l'environnement reste notre priorité et avec cette collection basée sur le respect commun de la culture des Premières Nations, nous souhaitons continuer sur ce chemin en intégrant cet aspect social et ancestral.

DE

Mit einem stetig wachsenden Bewusstsein für die Notwendigkeit, im Dialog mit der Natur zu stehen, orientieren wir uns an traditionellen Sichtweisen auf das Land. Die Kollektion **Upon Common Ground** setzt darauf, sich ganz und gar auf die Natur einzulassen und die tiefe Verbundenheit der indigenen Bevölkerung mit ihr zu erfassen.

Interface ist bestrebt, aus der Geschichte und kulturellen Bedeutung zu lernen, die die Menschen ihrem Land beimessen, und zu verstehen, welche Rolle der Mensch bei der Entwicklung gesunder natürlicher Umgebungen und produktiver Gemeinschaften spielt. So können wir zu einer nachhaltigen Zukunft für alle beitragen und gemeinsam einen dauerhaft positiven Einfluss auf unsere Umwelt ausüben.

NL

Met een groot besef dat het noodzakelijk is om contact te maken met de natuur, laten we ons leiden door de traditionele bewoners en beheerders van de landschappen in de natuur. De **Upon Common Ground**-collectie draait om het verkennen van deze natuurlijke landschappen en de diepe band die de First Nations-mensen daarmee hebben.

Interface probeert te leren van de geschiedenis en de culturele betekenis van deze landschappen. Hierbij hoort ook het begrijpen van onze rol bij het bijdragen aan de ontwikkeling van gezonde natuurlijke omgevingen en productieve gemeenschappen - en door dit te doen, zullen we bijdragen aan een duurzame toekomst voor iedereen.

We zijn toegewijd aan het vinden van 'common ground' met First Nations-mensen, omdat we geloven dat we samen een positieve en blijvende impact kunnen hebben op onze omgeving.

ES

Siendo cada vez más conscientes de la necesidad de conectar con la naturaleza, nos inspiramos en los métodos ancestrales de cuidar la tierra. La colección **Upon Common Ground**, viaja a diferentes lugares y explora su conexión con los primeros lugareños que los habitaron.

En Interface comprendemos la importancia de la historia y la cultura del territorio asumiendo nuestro papel para contribuir a la evolución hacia un medioambiente natural saludable y un entorno productivo. Así contribuimos a un futuro sostenible para todos.

Nos comprometemos a encontrar un denominador común entre los primeros habitantes del planeta, ya que juntos podemos generar un impacto positivo y duradero en nuestro medioambiente.

SE

Upon Common Ground-kollektionen fokuserar på att utforska platsen och den djupa kopplingen som urinnevånarna har till den. Med en ständigt ökande medvetenhet om behovet av att knyta an till naturen, vänder vi oss till urfolken för vägledning.

Interface strävar efter att lära sig av ett lands historia och kulturella betydelse och förstå vår roll i att bidra till utvecklingen av en välmående natur och produktiva samhällen – och genom att göra detta kommer vi att bidra till en hållbar framtid för alla.

Upon Common Ground är vår inbjudan till en dialog om hur vi kan lära oss av ursprungsbefolkningen i våra länder och deras fortsatta förvaltare och omsorg om sina marker. Vi är engagerade i att hitta en gemensam grund eftersom vi tillsammans tror att vi kan göra en positiv och varaktig inverkan på våra miljöer.





EN

A Connection to Country

Upon Common Ground is a collection of 5 biophilic-inspired carpet tile designs that capture the earth's natural beauty.

Waterways and textured sands inspire Sandbank, Shallows, and Undulating Water. Dry Bark showcases weathered tree bark. And, Escarpment captures the beauty of stone cliffs.

The colour range represents five key regions of Australia and is made with 100% recycled solution-dyed nylon with a carbon-neutral lifecycle.

FR

Un lien avec le pays

Upon Common Ground est une collection de 5 dalles et lames de moquette d'inspiration biophilique, qui capturent la beauté naturelle de la Terre.

Les voies navigables et les sables texturés se retrouvent dans le design de Sandbank, Shallows et Undulating Water. Dry Bark représente l'écorce vieillie des arbres australiens. Et Escarpment capture la beauté des falaises de pierre du pays.

La gamme de couleurs représente les cinq biotopes principaux de l'Australie. De plus, la collection est fabriquée avec une fibre en nylon 100% recyclé et elle participe à la neutralité carbone collective cradle-to-cradle.

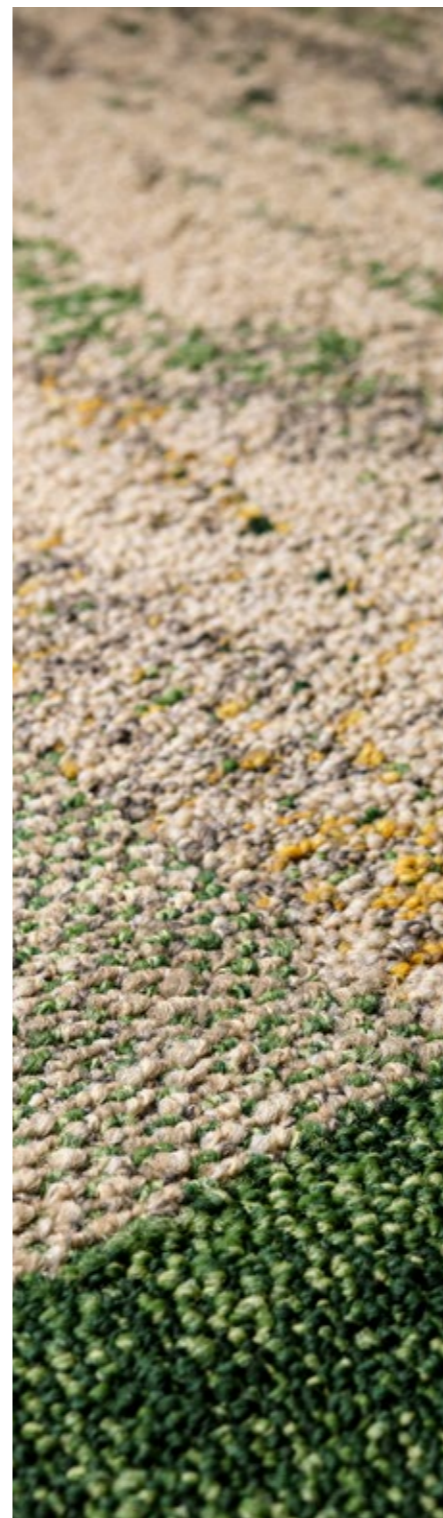
DE

Eine Verbindung zum Land

Die Teppichfliesenkollektion Upon Common Ground besteht aus fünf von der Natur inspirierten, biophilen Designs, die die natürliche Schönheit der Erde einfangen.

Sandbank, Shallows und Undulating Water sind inspiriert von Sand, der durch Wasserläufe strukturiert ist. Dry Bark verkörpert die natürlichen Furchen in verwitterter Baumrinde, während Escarpment die erdigen Details von jahrhundertealten Steinfelsen einfängt.

Die Farbpalette von Upon Common Ground repräsentiert fünf Regionen Australiens. Die Kollektion wird aus 100 % recyceltem Solution Dyed Polyamid hergestellt und ist über den gesamten Lebenszyklus hinweg klimaneutral.



NL

Een verbinding met het natuurlandschap

Upon Common Ground is een collectie van 5 biofiel geïnspireerde tapijttegelontwerpen die de natuurlijke schoonheid van de aarde vastleggen.

Waterwegen en getextureerd zand inspireren Sandbank, Shallows en Undulating Water. Dry Bark toont verweerde boomschors. En Escarpment vangt de schoonheid van stenen kliffen.

Het kleurengamma vertegenwoordigt vijf belangrijke regio's van Australië en is gemaakt van 100% gerecycled solution-dyed nylon met een CO2-neutrale levenscyclus.

ES

Una conexión con el territorio

Upon Common Ground es una colección de moqueta con 5 diseños biofílicos que reflejan la belleza natural de la tierra.

La texturización del curso del agua y las arenas inspiran Sandbank, Shallows y Undulating Water. Dry Bark muestra la corteza de árbol erosionada. Y Escarpment refleja la belleza de los acantilados de piedra.

La gama de colores representa cinco regiones clave de Australia y está fabricada con fibra 100 % reciclada con un ciclo de vida neutro en carbono.

SE

En djup koppling till landet

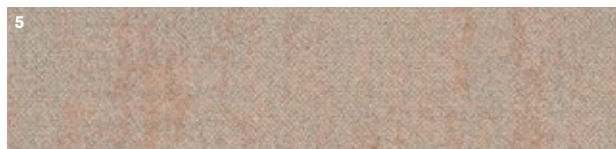
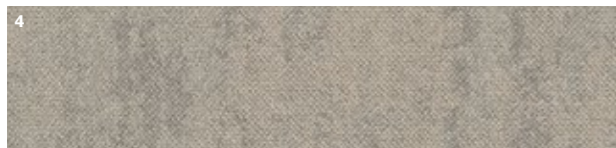
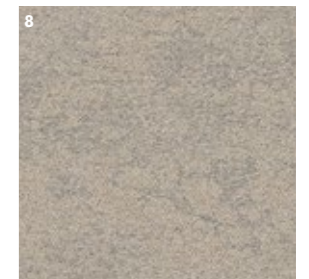
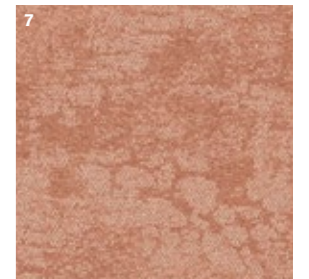
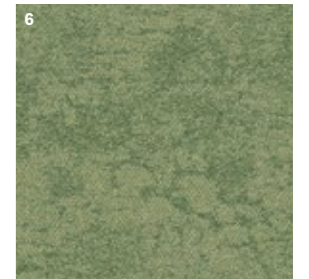
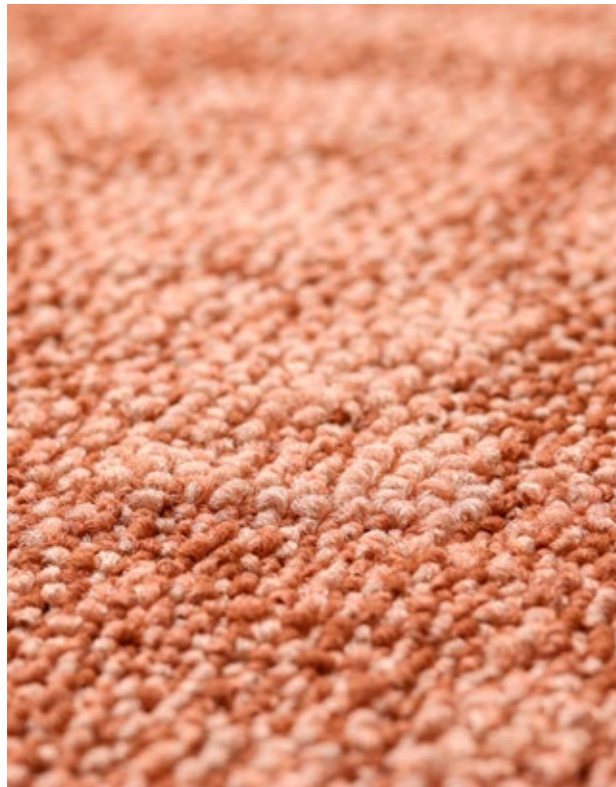
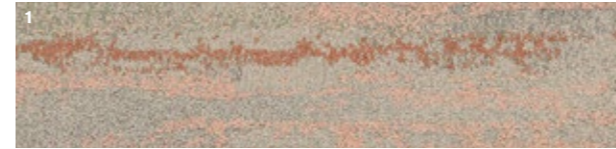
Upon Common Ground är en samling av 5 biofilt inspirerade textilplattor som fångar jordens naturliga skönhet.

Vattenvägar och texturerad sand inspirerar Sandbank, Shallows och Undulating Water. Dry Bark visar upp väderbiten trädbark. Escarpment fångar skönheten i stenklippor.

Färgutbudet representerar fem nyckelregioner i Australien och är tillverkat av 100 % återvunnen nylon som är koldioxidneutral under hela sin livscykel.

Desert Palette

- 1. **UNDULATING WATER** 2526001 DESERT
- 2. **SHALLOWS** 2527001 DESERT
- 3. **SANDBANK** 2528001 DESERT
- 4. **DRY BARK** 2529001 DESERT NEUTRAL
- 5. **DRY BARK** 2529002 DESERT SANDS
- 6. **ESCARPMENT** 2525001 DESERT SHRUB
- 7. **ESCARPMENT** 2525002 DESERT SANDS
- 8. **ESCARPMENT** 2525003 DESERT NEUTRAL





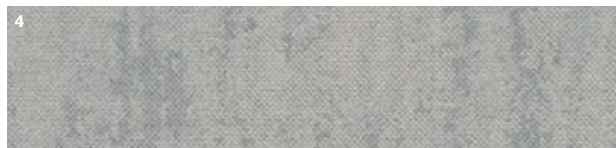
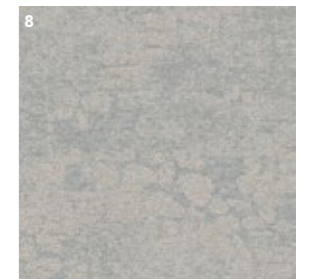
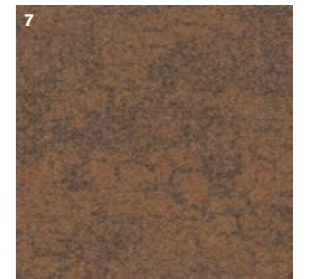
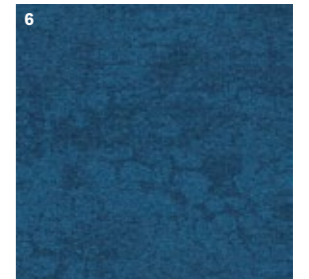
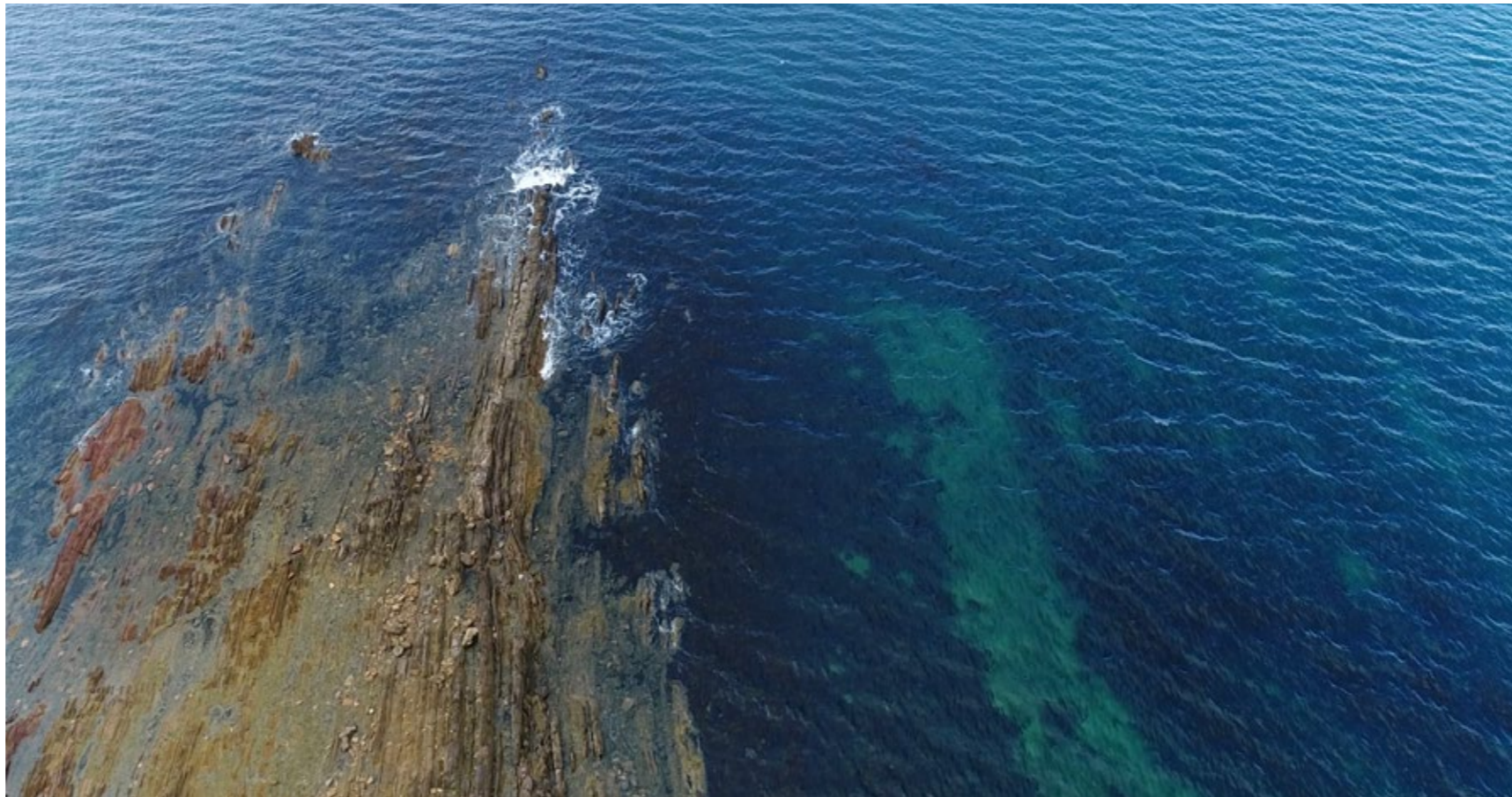
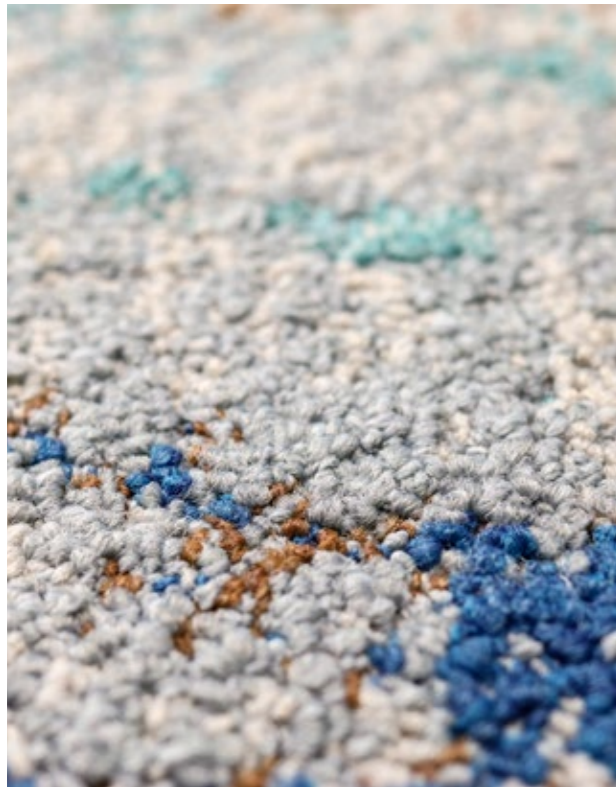
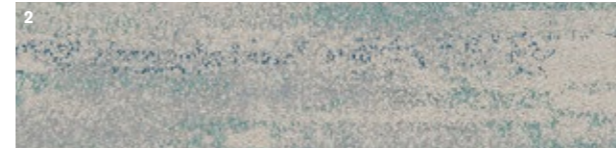
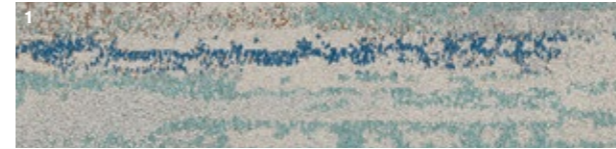
PRODUCT ESCARPMENT COLOUR DESERT SANDS INSTALLED ASHLAR
PRODUCT DRY BARK COLOUR DESERT SANDS INSTALLED ASHLAR



PRODUCT UNDULATING WATER COLOUR DESERT INSTALLED ASHLAR
PRODUCT SHALLOWS COLOUR DESERT INSTALLED ASHLAR
PRODUCT SANDBANK COLOUR DESERT INSTALLED ASHLAR
PRODUCT ESCARPMENT COLOUR DESERT SHRUB INSTALLED ASHLAR

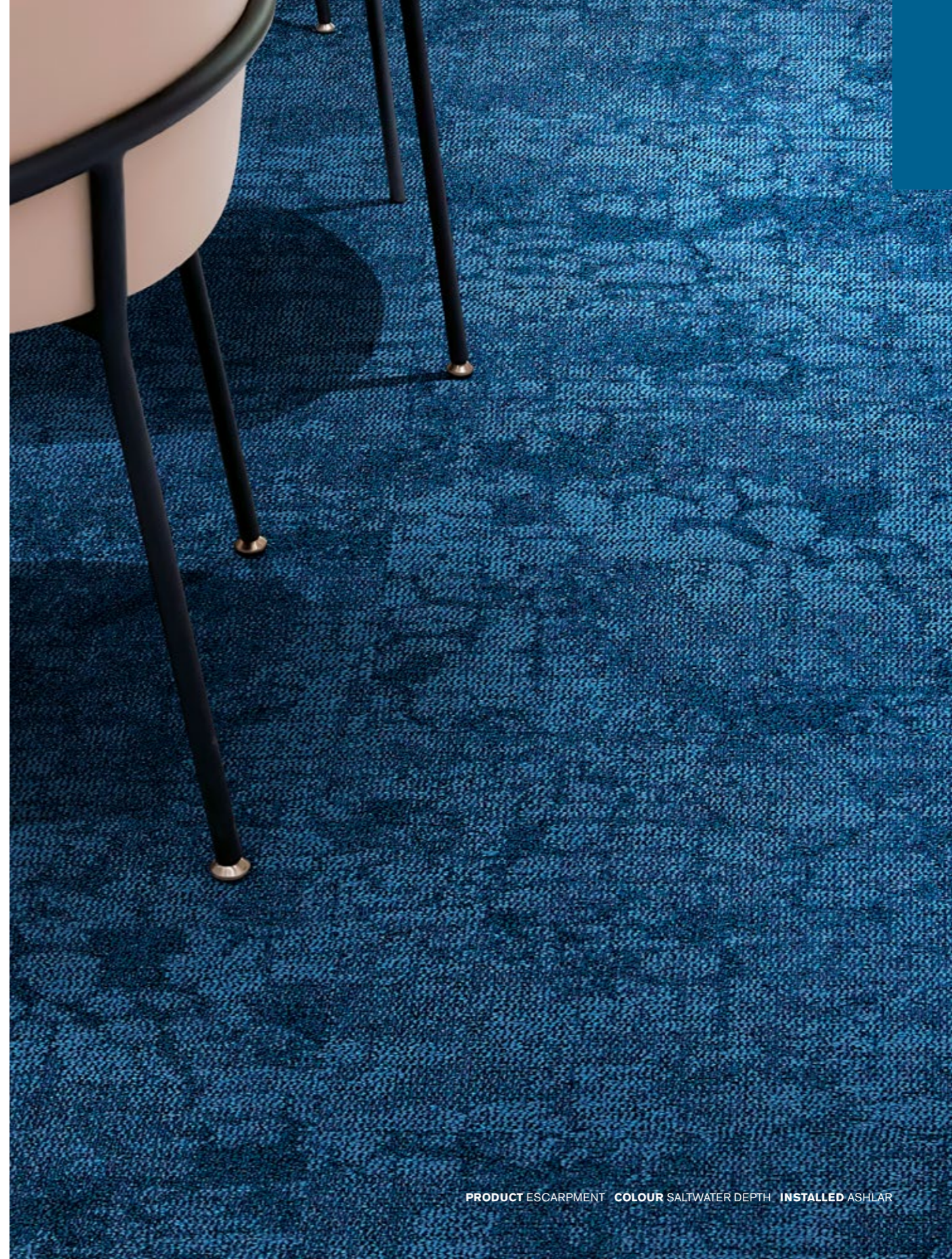
Saltwater Palette

- 1. **UNDULATING WATER** 2526002 SALTWATER
- 2. **SHALLOWS** 2527002 SALTWATER
- 3. **SANDBANK** 2528002 SALTWATER
- 4. **DRY BARK** 2529003 SALTWATER NEUTRAL
- 5. **DRY BARK** 2529004 SALTWATER DEPTH
- 6. **ESCARPMENT** 2525004 SALTWATER DEPTH
- 7. **ESCARPMENT** 2525005 SALTWATER CLIFF
- 8. **ESCARPMENT** 2525006 SALTWATER NEUTRAL





PRODUCT UNDULATING WATER COLOUR SALTWATER INSTALLED ASHLAR
PRODUCT SHALLOWS COLOUR SALTWATER INSTALLED ASHLAR
PRODUCT SANDBANK COLOUR SALTWATER INSTALLED ASHLAR
PRODUCT DRY BARK COLOUR SALTWATER DEPTH INSTALLED ASHLAR
PRODUCT ESCARPMENT COLOUR SALTWATER NEUTRAL INSTALLED ASHLAR



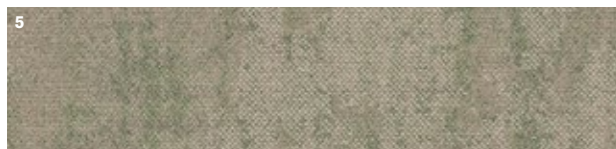
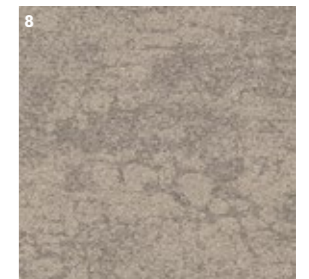
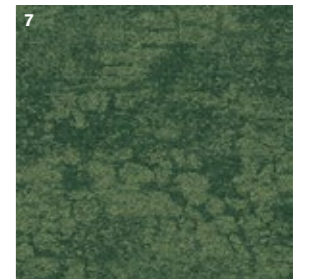
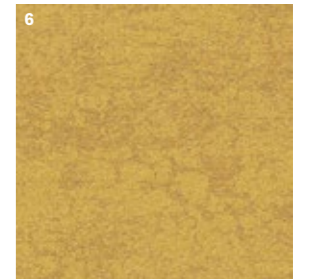
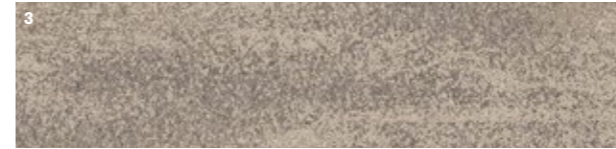
PRODUCT ESCARPMENT COLOUR SALTWATER DEPTH INSTALLED ASHLAR

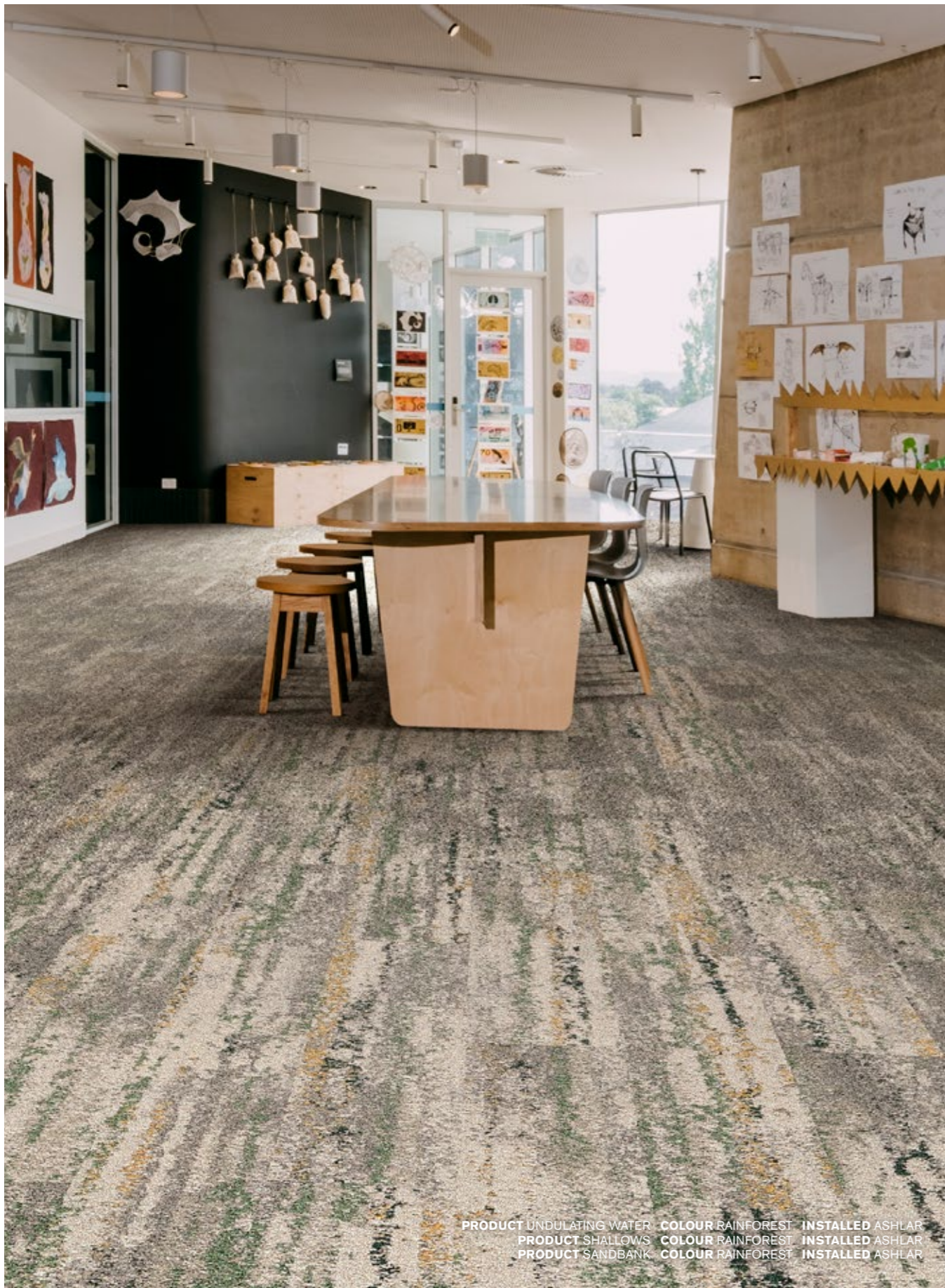


PRODUCT UNDULATING WATER COLOUR SALTWATER INSTALLED ASHLAR
PRODUCT SHALLOWS COLOUR SALTWATER INSTALLED ASHLAR

Rainforest Palette

- 1. **UNDULATING WATER** 2526003 RAINFOREST
- 2. **SHALLOWS** 2527003 RAINFOREST
- 3. **SANDBANK** 2528003 RAINFOREST
- 4. **DRY BARK** 2529005 RAINFOREST NEUTRAL
- 5. **DRY BARK** 2529006 RAINFOREST CANOPY
- 6. **ESCARPMENT** 2525007 RAINFOREST FLOOR
- 7. **ESCARPMENT** 2525008 RAINFOREST CANOPY
- 8. **ESCARPMENT** 2525009 RAINFOREST NEUTRAL





PRODUCT UNDULATING WATER COLOUR RAINFOREST INSTALLED ASHLAR
PRODUCT SHALLOWS COLOUR RAINFOREST INSTALLED ASHLAR
PRODUCT SANDBANK COLOUR RAINFOREST INSTALLED ASHLAR



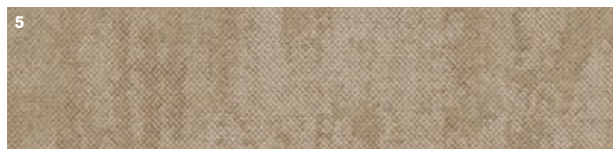
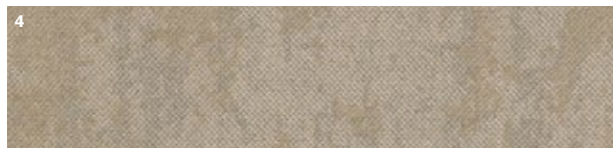
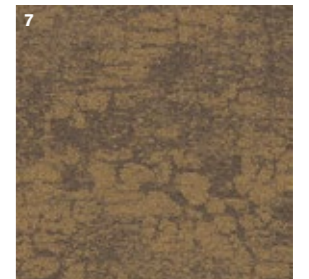
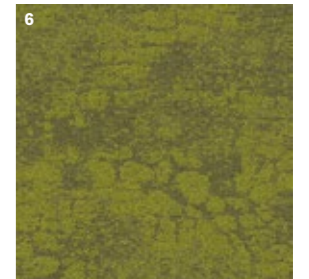
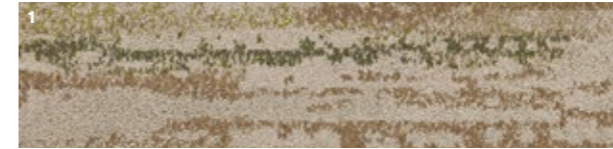
PRODUCT UNDULATING WATER COLOUR RAINFOREST INSTALLED ASHLAR
PRODUCT SANDBANK COLOUR RAINFOREST INSTALLED ASHLAR



PRODUCT SHALLOWS COLOUR RAINFOREST INSTALLED ASHLAR
PRODUCT ESCARPMENT COLOUR RAINFOREST CANOPY INSTALLED ASHLAR

Freshwater Palette

- 1. **UNDULATING WATER** 2526004 FRESHWATER
- 2. **SHALLOWS** 2527004 FRESHWATER
- 3. **SANDBANK** 2528004 FRESHWATER
- 4. **DRY BARK** 2529007 FRESHWATER NEUTRAL
- 5. **DRY BARK** 2529008 FRESHWATER GORGE
- 6. **ESCARPMENT** 2525010 FRESHWATER LOMANDRA
- 7. **ESCARPMENT** 2525011 FRESHWATER GORGE
- 8. **ESCARPMENT** 2525012 FRESHWATER NEUTRAL





PRODUCT UNDULATING WATER COLOUR FRESHWATER INSTALLED ASHLAR
PRODUCT SHALLOWS COLOUR FRESHWATER INSTALLED ASHLAR
PRODUCT SANDBANK COLOUR FRESHWATER INSTALLED ASHLAR



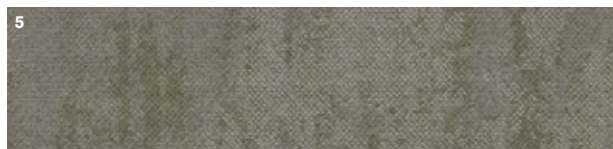
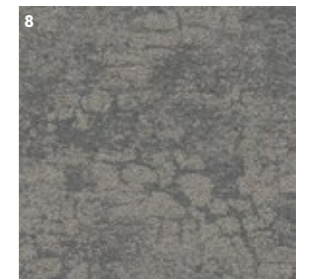
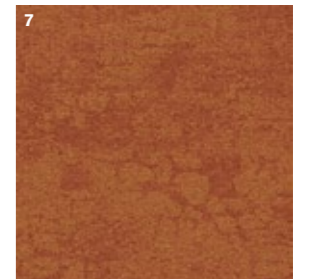
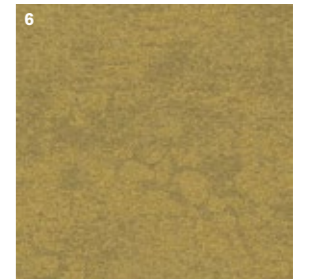
PRODUCT DRY BARK COLOUR FRESHWATER NEUTRAL INSTALLED ASHLAR



PRODUCT ESCARPMENT COLOUR FRESHWATER GORGE INSTALLED ASHLAR
PRODUCT ESCARPMENT COLOUR FRESHWATER LOMANDRA INSTALLED ASHLAR

Spinifex Palette

1. **UNDULATING WATER** 2526005 SPINIFEX
2. **SHALLOWS** 2527005 SPINIFEX
3. **SANDBANK** 2528005 SPINIFEX
4. **DRY BARK** 2529009 SPINIFEX NEUTRAL
5. **DRY BARK** 2529010 SPINIFEX GRASS
6. **ESCARPMENT** 2525013 SPINIFEX GRASS
7. **ESCARPMENT** 2525014 SPINIFEX DIRT
8. **ESCARPMENT** 2525015 SPINIFEX NEUTRAL





PRODUCT UNDULATING WATER COLOUR SPINIFEX INSTALLED ASHLAR
PRODUCT ESCARPMENT COLOUR SPINIFEX NEUTRAL INSTALLED ASHLAR



PRODUCT ESCARPMENT COLOUR SPINIFEX GRASS INSTALLED ASHLAR
PRODUCT UNDULATING WATER COLOUR SPINIFEX INSTALLED ASHLAR



PRODUCT UNDULATING WATER COLOUR SPINIFEX INSTALLED ASHLAR
PRODUCT SHALLOWS COLOUR SPINIFEX INSTALLED ASHLAR
PRODUCT SANDBANK COLOUR SPINIFEX INSTALLED ASHLAR
PRODUCT DRY BARK COLOUR SPINIFEX NEUTRAL INSTALLED ASHLAR



Carbon Footprint / m² (Cradle to Gate)*

Dry Bark	3.57 kg CO ₂
Escarpment	3.22 kg CO ₂
Sandbank	4.19 kg CO ₂
Shallows	4.55 kg CO ₂
Undulating Water	4.55 kg CO ₂

Potential Green Building Contribution

See contributions for each at interface.com

Certifications

For more information visit interface.com

Total Recycled and Bio-Based Content

Drybark	93.8%
Escarpment	93.8%
Sandbank	91.1%
Shallows	91.3%
Undulating Water	91.3%

Yarn Recycled Content

100%

Wear Classification

Class 33 Heavy Contract

Total Virgin Content (non recycled and non bio-based)

Drybark	6.2%
Escarpment	6.2%
Sandbank	8.9%
Shallows	8.7%
Undulating Water	8.7%

Impact Sound Insulation ΔL_w EN ISO 10140-3

25 dB

Rating of Sound Absorption EN ISO 11654

α_w 0.20

* Please see interface.com for the most up to date numbers from our EPD.



Standard Backing CQuest™ Bio



EN

CQuest™ Bio is non-vinyl, non-bitumen made with a bio-composite, containing bio-based and recycled fillers. These materials, when measured on a standalone basis are net carbon negative.

DE

CQuest™ Bio ist eine PVC- und bitumenfreie Rückenkonstruktion, in der biobasierte und recycelte Füllstoffe verwendet werden. Einige der darin enthaltenen Materialien sind für sich betrachtet CO₂-negativ und reduzieren unseren CO₂-Fußabdruck maßgeblich.

FR

CQuest™ Bio est notre nouvelle sous-couche pour dalles de moquette, sans PVC et sans bitume. Elle est fabriquée avec un bio-composite, mélange de matériaux bio-sourcés et recyclés au bilan carbone net négatif.

NL

CQuest™ Bio is onze nieuwe vinylvrije, niet-bitumen tapijttegelbacking gemaakt van een bio-composiet met biobased en gerecyclede vulstoffen. Deze materialen, gemeten op een stand-alone basis, zijn netto CO₂-negatief.

ES

CQuest™ Bio no contiene vinilo ni bitumen. Está fabricado con compuestos bio y rellenos orgánicos y reciclados. Estos materiales son negativos en emisiones de carbono.

SE

CQuest™ Bio är vår nya baksida för textilplattor. Den innehåller varken vinyl eller bitumen utan är tillverkad av biokomposit som innehåller biobaserade och återvunna fyllnadsmaterial. Detta gör CQuest™ Bio netto koldioxidnegativ.

Carbon Neutral Floors™



EN

When you specify flooring from Interface, you're selecting products that are carbon neutral across their full product lifecycle.

DE

Wenn Sie sich für Bodenbeläge von Interface entscheiden, wählen Sie Produkte, die über ihren gesamten Lebenszyklus CO₂-neutral sind.

FR

Lorsque vous choisissez un revêtement de sol Interface, vous optez pour des produits qui participent à la neutralité carbone collective, tout au long de leur cycle de vie.

NL

Wanneer u vloeren van Interface specificeert, selecteert u producten die klimaatneutraal zijn over hun volledige product levenscyclus.

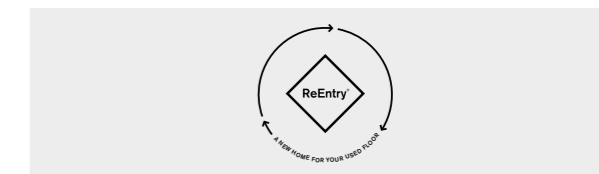
ES

Cuando prescribes pavimentos de Interface, estás seleccionando productos que son neutros en emisiones de carbono en todo su ciclo de vida.

SE

När du föreskriver Interface golv, väljer du produkter som är koldioxidneutrala genom hela produktivscykeln

ReEntry®



EN

Interface promises to take back our customers used flooring product (carpet tile, LVT and Rubber) and create further value with them in the most sustainable way.

DE

Wir geben Ihnen das Versprechen, Ihre gebrauchten Interface-Bodenbeläge zurückzunehmen und damit einen Mehrwert auf nachhaltigste Art und Weise zu schaffen.

FR

Interface accompagne ses clients dans la reprise de ses revêtements de sol usagés, afin de leur donner une deuxième vie de la façon la plus éco-responsable possible.

NL

Interface belooft onze gebruikte vloerproducten van klanten terug te nemen en creëert daarmee meerwaarde in de meest duurzame manier.

ES










Interface se compromete a recuperar los pavimentos usados de nuestros clientes (moqueta modular, LVT y caucho) y crear valor a partir de ellos de la forma más sostenible.

Technical Specifications

Dry Bark

Product Definition	Tufted Patterned Structured Loop Pile							
Konstruktion	Tuftgemusterte strukturierte Schlingenqualität							
Descripción	Moqueta modular tufting bucle estructurado con diseño							
Description	Dalle de moquette à velours tufté bouclé structuré à motifs							
Type	Getufte gedessineerde gestructureerde bouclé							
Descrizione	Bouclé tufted strutturato							
Pile Material	100% Recycled Solution Dyed Nylon							
Polfasermaterial	100% recyceltes Polyamid garngefärbt							
Composición Fibra	100% Poliamida reciclada tintada en masa							
Composition	100% Polyamide recyclé teint masse							
Poolmateriaal	100% Solution Dyed Gerecycled Polyamide							
Fibra	100% Poliammide tinta in massa riciclata							
Pile Yarn Weight / Poleinsatzgewicht / Peso Fibra / Poids de fibre / Poolinzetgewicht / Peso Felpa	780 g/m ² ± 5%							
Total Weight / Gesamtgewicht / Peso Total / Poids total / Totaalgewicht / Peso Totale	4207 g/m ² ± 5%							
Pile Height / Polschichtdicke / Altura Fibra / Hauteur de la fibre / Poolhoogte / Altezza Felpa	3.6 mm + 15% / - 10%							
Total Thickness / Gesamtdicke / Espesor Total / Epaisseur totale / Totale dikte / Altezza Totale	7.6 mm ± 0.5 mm							
Gauge/Ends 10 cm / Teilung x 10 cm / Galga x 10 cm / Jauge-Rangs par 10 cm / Rijen per 10 cm / Serraggio x 10 cm	1/10 – 39.4							
Tufts per m² / Noppenzahl/m ² / Puntadas m ² / Densité du tuft par m ² / Aantal noppen per m ² / Densità Punti	171,969 ± 5%							
Backing Type / Rückenkonstruktion / Soporte / Sous-couche / Ruguitvoering / Sottofondo	CQuest™Bio							
Wear Classification / Beanspruchungsklasse / Clasificación al tráfico / Classement d'usage et de confort / Gebruiksintensiteit / Resistenza all'usura	Heavy Contract (EN 1307) Class 33 / LC2							
Radiant Panel / Schwerentflammbarkeit / Clasificación Al Fuego / Classement feu / De Radiant Panel Test / Valutazione delle proprietà ignifughe	(EN ISO 9239-1) Euroclass Bfl s1 (EN 13501-1)							
Dimensional Stability / Dimensionsstabilität / Estabilidad Dimensional / Stabilité dimensionnelle / Dimensionele stabiliteit / Test Stabilità dimensionale	≤ 0.2% (EN 986)							
Impact Sound Insulation (ΔL_w) / Trittschallverbesserungsmaß / Impacto Aislamiento Acústico / Réduction du bruit d'impact / Contactgeluid absorptie / Isolamento all'impatto acustico	25 dB (EN ISO 10140-3)							
Rating of Sound Absorption / Gewichteter Schallabsorptionskoeffizient / Clasificación de Absorción de Sonido / Coefficient d'absorption acoustique / Waarde geluidsabsorptie / Valutazione dell'assorbimento acustico	α _w 0.20 (EN ISO 11654)							
Sound Absorption / Schallabsorptionsgrad / Absorción de Sonido / Absorption acoustique / Geluidsabsorptie / Assorbimento acustico								
	<table border="1"> <tr> <td>125Hz 0.01</td> <td>250Hz 0.03</td> <td>500Hz 0.08</td> <td>1000Hz 0.21</td> <td>2000Hz 0.36</td> <td>4000Hz 0.43</td> <td>(EN ISO 354) α_s</td> </tr> </table>	125Hz 0.01	250Hz 0.03	500Hz 0.08	1000Hz 0.21	2000Hz 0.36	4000Hz 0.43	(EN ISO 354) α _s
125Hz 0.01	250Hz 0.03	500Hz 0.08	1000Hz 0.21	2000Hz 0.36	4000Hz 0.43	(EN ISO 354) α _s		

Style 2529 4m² - 16 tiles per box (25 x 100 cm ± 0.2%)

 DOP: 1037/129769 EN 14041:2004 Notified Body - 0493 COC 0493 - CPR - 0181 For use as floor covering in buildings	 DOP: 1037/129769 EN 14041:2004 Approved Body - 0321 COC 0321/20664-02/E00-00 For use as floor covering in buildings	    ≥ 2.4	   Install with Tac Tiles®
--	---	---	---

Escarpment

Product Definition	Tufted Patterned Structured Loop Pile							
Konstruktion	Tuftgemusterte strukturierte Schlingenqualität							
Descripción	Moqueta modular tufting bucle estructurado con diseño							
Description	Dalle de moquette à velours tufté bouclé structuré à motifs							
Type	Getufte gedessineerde gestructureerde bouclé							
Descrizione	Bouclé tufted strutturato							
Pile Material	100% Recycled Solution Dyed Nylon							
Polfasermaterial	100% recyceltes Polyamid garngefärbt							
Composición Fibra	100% Poliamida reciclada tintada en masa							
Composition	100% Polyamide recyclé teint masse							
Poolmateriaal	100% Solution Dyed Gerecycled Polyamide							
Fibra	100% Poliammide tinta in massa riciclata							
Pile Yarn Weight / Poleinsatzgewicht / Peso Fibra / Poids de fibre / Poolinzetgewicht / Peso Felpa	644 g/m ² ± 5%							
Total Weight / Gesamtgewicht / Peso Total / Poids total / Totaalgewicht / Peso Totale	3945 g/m ² ± 5%							
Pile Height / Polschichtdicke / Altura Fibra / Hauteur de la fibre / Poolhoogte / Altezza Felpa	3.5 mm + 15% / - 10%							
Total Thickness / Gesamtdicke / Espesor Total / Epaisseur totale / Totale dikte / Altezza Totale	7.0 mm ± 0.5 mm							
Gauge/Ends 10 cm / Teilung x 10 cm / Galga x 10 cm / Jauge-Rangs par 10 cm / Rijen per 10 cm / Serraggio x 10 cm	1/10 – 39.4							
Tufts per m² / Noppenzahl/m ² / Puntadas m ² / Densité du tuft par m ² / Aantal noppen per m ² / Densità Punti	157,639 ± 5%							
Backing Type / Rückenkonstruktion / Soporte / Sous-couche / Ruguitvoering / Sottofondo	CQuest™Bio							
Wear Classification / Beanspruchungsklasse / Clasificación al tráfico / Classement d'usage et de confort / Gebruiksintensiteit / Resistenza all'usura	Heavy Contract (EN 1307) Class 33 / LC1							
Radiant Panel / Schwerentflammbarkeit / Clasificación Al Fuego / Classement feu / De Radiant Panel Test / Valutazione delle proprietà ignifughe	(EN ISO 9239-1) Euroclass Bfl s1 (EN 13501-1)							
Dimensional Stability / Dimensionsstabilität / Estabilidad Dimensional / Stabilité dimensionnelle / Dimensionele stabiliteit / Test Stabilità dimensionale	≤ 0.2% (EN 986)							
Impact Sound Insulation (ΔL_w) / Trittschallverbesserungsmaß / Impacto Aislamiento Acústico / Réduction du bruit d'impact / Contactgeluid absorptie / Isolamento all'impatto acustico	25 dB (EN ISO 10140-3)							
Rating of Sound Absorption / Gewichteter Schallabsorptionskoeffizient / Clasificación de Absorción de Sonido / Coefficient d'absorption acoustique / Waarde geluidsabsorptie / Valutazione dell'assorbimento acustico	α _w 0.20 (EN ISO 11654)							
Sound Absorption / Schallabsorptionsgrad / Absorción de Sonido / Absorption acoustique / Geluidsabsorptie / Assorbimento acustico								
	<table border="1"> <tr> <td>125Hz 0.01</td> <td>250Hz 0.03</td> <td>500Hz 0.08</td> <td>1000Hz 0.21</td> <td>2000Hz 0.36</td> <td>4000Hz 0.43</td> <td>(EN ISO 354) α_s</td> </tr> </table>	125Hz 0.01	250Hz 0.03	500Hz 0.08	1000Hz 0.21	2000Hz 0.36	4000Hz 0.43	(EN ISO 354) α _s
125Hz 0.01	250Hz 0.03	500Hz 0.08	1000Hz 0.21	2000Hz 0.36	4000Hz 0.43	(EN ISO 354) α _s		

Style 2525 4m² - 16 tiles per box (50 x 50 cm ± 0.2%)



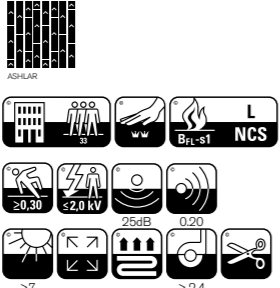
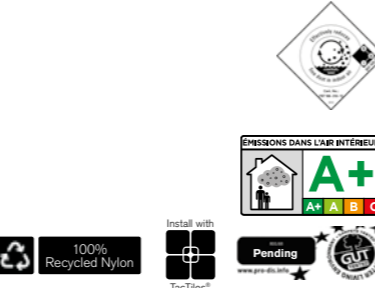
 DOP: 1037/129770 EN 14041:2004 Notified Body - 0493 COC 0493 - CPR - 0181 For use as floor covering in buildings	 DOP: 1037/129770 EN 14041:2004 Approved Body - 0321 COC 0321/20664-02/E00-00 For use as floor covering in buildings	    ≥ 2.4	   Install with Tac Tiles®
--	---	---	--

Technical Specifications

Sandbank

Product Definition	Tapestry Tufted Patterned Structured Loop Pile							
Konstruktion	Tuftgemusterte strukturierte Schlingenqualität mit Web-Optik							
Descripción	Moqueta modular de pelo cortado estructurado/Tapestry							
Description	Dalle de moquette à velours tufté structuré à motifs (procédé Tapestry)							
Type	Getufte gedessineerde gestructureerde bouclé							
Descrizione	Bouclé Tufted Structured Tapestry							
Pile Material	100% Recycled Solution Dyed Nylon							
Polfasermaterial	100% recyceltes Polyamid garngefärbt							
Composición Fibra	100% Poliamida reciclada tintada en masa							
Composition	100% Polyamide recyclé teint masse							
Poolmateriaal	100% Solution Dyed Gerecycled Polyamide							
Fibra	100% Poliammide tinta in massa riciclata							
Pile Yarn Weight / Poleinsatzgewicht / Peso Fibra / Poids de fibre / Poolinzetgewicht / Peso Felpa	1017 g/m ² ± 5%							
Total Weight / Gesamtgewicht / Peso Total / Poids total / Totaalgewicht / Peso Totale	4561 g/m ² ± 5%							
Pile Height / Polschichtdicke / Altura Fibra / Hauteur de la fibre / Poolhoogte / Altezza Felpa	4.2 mm + 15% / - 10%							
Total Thickness / Gesamtdicke / Espesor Total / Epaisseur totale / Totale dikte / Altezza Totale	9.5 mm ± 0.5 mm							
Gauge/Ends 10 cm / Teilung x 10 cm / Galga x 10 cm / Jauge-Rangs par 10 cm / Rijen per 10 cm / Serraggio x 10 cm	1/10 – 39.4							
Tufts per m² / Noppenzahl/m ² / Puntadas m ² / Densité du tuft par m ² / Aantal noppen per m ² / Densità Punti	132,878 ± 5%							
Backing Type / Rückenkonstruktion / Soporte / Sous-couche / Ruguitvoering / Sottofondo	CQuest™Bio							
Wear Classification / Beanspruchungsklasse / Clasificación al tráfico / Classement d'usage et de confort / Gebruiksintensiteit / Resistenza all'usura	Heavy Contract (EN 1307) Class 33 / LC2							
Radiant Panel / Schwerentflammbarkeit / Clasificación Al Fuego / Classement feu / De Radiant Panel Test / Valutazione delle proprietà ignifughe	(EN ISO 9239-1) Euroclass Bfl s1 (EN 13501-1)							
Dimensional Stability / Dimensionsstabilität / Estabilidad Dimensional / Stabilité dimensionnelle / Dimensionele stabiliteit / Test Stabilità dimensionale	≤ 0.2% (EN 986)							
Impact Sound Insulation (ΔL_w) / Trittschallverbesserungsmaß / Impacto Aislamiento Acústico / Réduction du bruit d'impact / Contactgeluid absorptie / Isolamento all'impatto acustico	25 dB (EN ISO 10140-3)							
Rating of Sound Absorption / Gewichteter Schallabsorptionskoeffizient / Clasificación de Absorción de Sonido / Coefficient d'absorption acoustique / Waarde geluidsabsorptie / Valutazione dell'assorbimento acustico	α _w 0.20 (EN ISO 11654)							
Sound Absorption / Schallabsorptionsgrad / Absorción de Sonido / Absorption acoustique / Geluidsabsorptie / Assorbimento acustico								
	<table border="1"> <tr> <td>125Hz 0.02</td> <td>250Hz 0.03</td> <td>500Hz 0.09</td> <td>1000Hz 0.27</td> <td>2000Hz 0.45</td> <td>4000Hz 0.57</td> <td>(EN ISO 354) α_s</td> </tr> </table>	125Hz 0.02	250Hz 0.03	500Hz 0.09	1000Hz 0.27	2000Hz 0.45	4000Hz 0.57	(EN ISO 354) α _s
125Hz 0.02	250Hz 0.03	500Hz 0.09	1000Hz 0.27	2000Hz 0.45	4000Hz 0.57	(EN ISO 354) α _s		

Style 2528 3m² - 12 tiles per box (25 x 100 cm ± 0.2%)

 DOP: 1037/129771 EN 14041:2004 Notified Body - 0493 COC 0493 - CPR - 0181 For use as floor covering in buildings	 DOP: 1037/129771 EN 14041:2004 Approved Body - 0321 COC 0321/20664-02/E00-00 For use as floor covering in buildings	 ≥ 2.4	 100% Recycled Nylon Pending Tac Tiles®
--	---	--	--

Shallows

Product Definition	Tapestry Tufted Patterned Structured Loop Pile							
Konstruktion	Tuftgemusterte strukturierte Schlingenqualität mit Web-Optik							
Descripción	Moqueta modular de pelo cortado estructurado/Tapestry							
Description	Dalle de moquette à velours tufté structuré à motifs (procédé Tapestry)							
Type	Getufte gedessineerde gestructureerde bouclé							
Descrizione	Bouclé Tufted Structured Tapestry							
Pile Material	100% Recycled Solution Dyed Nylon							
Polfasermaterial	100% recyceltes Polyamid garngefärbt							
Composición Fibra	100% Poliamida reciclada tintada en masa							
Composition	100% Polyamide recyclé teint masse							
Poolmateriaal	100% Solution Dyed Gerecycled Polyamide							
Fibra	100% Poliammide tinta in massa riciclata							
Pile Yarn Weight / Poleinsatzgewicht / Peso Fibra / Poids de fibre / Poolinzetgewicht / Peso Felpa	1153 g/m ² ± 5%							
Total Weight / Gesamtgewicht / Peso Total / Poids total / Totaalgewicht / Peso Totale	4715 g/m ² ± 5%							
Pile Height / Polschichtdicke / Altura Fibra / Hauteur de la fibre / Poolhoogte / Altezza Felpa	4.0 mm + 15% / - 10%							
Total Thickness / Gesamtdicke / Espesor Total / Epaisseur totale / Totale dikte / Altezza Totale	9.4 mm ± 0.5 mm							
Gauge/Ends 10 cm / Teilung x 10 cm / Galga x 10 cm / Jauge-Rangs par 10 cm / Rijen per 10 cm / Serraggio x 10 cm	1/10 – 39.4							
Tufts per m² / Noppenzahl/m ² / Puntadas m ² / Densité du tuft par m ² / Aantal noppen per m ² / Densità Punti	149,488 ± 5%							
Backing Type / Rückenkonstruktion / Soporte / Sous-couche / Ruguitvoering / Sottofondo	CQuest™Bio							
Wear Classification / Beanspruchungsklasse / Clasificación al tráfico / Classement d'usage et de confort / Gebruiksintensiteit / Resistenza all'usura	Heavy Contract (EN 1307) Class 33 / LC2							
Radiant Panel / Schwerentflammbarkeit / Clasificación Al Fuego / Classement feu / De Radiant Panel Test / Valutazione delle proprietà ignifughe	(EN ISO 9239-1) Euroclass Bfl s1 (EN 13501-1)							
Dimensional Stability / Dimensionsstabilität / Estabilidad Dimensional / Stabilité dimensionnelle / Dimensionele stabiliteit / Test Stabilità dimensionale	≤ 0.2% (EN 986)							
Impact Sound Insulation (ΔL_w) / Trittschallverbesserungsmaß / Impacto Aislamiento Acústico / Réduction du bruit d'impact / Contactgeluid absorptie / Isolamento all'impatto acustico	25 dB (EN ISO 10140-3)							
Rating of Sound Absorption / Gewichteter Schallabsorptionskoeffizient / Clasificación de Absorción de Sonido / Coefficient d'absorption acoustique / Waarde geluidsabsorptie / Valutazione dell'assorbimento acustico	α _w 0.20 (EN ISO 11654)							
Sound Absorption / Schallabsorptionsgrad / Absorción de Sonido / Absorption acoustique / Geluidsabsorptie / Assorbimento acustico								
	<table border="1"> <tr> <td>125Hz 0.02</td> <td>250Hz 0.03</td> <td>500Hz 0.09</td> <td>1000Hz 0.27</td> <td>2000Hz 0.45</td> <td>4000Hz 0.57</td> <td>(EN ISO 354) α_s</td> </tr> </table>	125Hz 0.02	250Hz 0.03	500Hz 0.09	1000Hz 0.27	2000Hz 0.45	4000Hz 0.57	(EN ISO 354) α _s
125Hz 0.02	250Hz 0.03	500Hz 0.09	1000Hz 0.27	2000Hz 0.45	4000Hz 0.57	(EN ISO 354) α _s		

Style 2527 3m² - 12 tiles per box (25 x 100 cm ± 0.2%)













 DOP: 1037/129772 EN 14041:2004 Notified Body - 0493 COC 0493 - CPR - 0181 For use as floor covering in buildings	 DOP: 1037/129772 EN 14041:2004 Approved Body - 0321 COC 0321/20664-02/E00-00 For use as floor covering in buildings	 ≥ 2.4	 100% Recycled Nylon Pending Tac Tiles®
--	---	--	---

Technical Specifications

Undulating Water

Product Definition	Tapestry Tufted Patterned Structured Loop Pile					
Konstruktion	Tuftgemusterte strukturierte Schlingenqualität mit Web-Optik					
Descripción	Moqueta modular de pelo cortado estructurado/Tapestry					
Description	Dalle de moquette à velours tufté structuré à motifs (procédé Tapestry)					
Type	Getufte gedessineerde gestructureerde bouclé					
Descrizione	Bouclé Tufted Structured Tapestry					
Pile Material	100% Recycled Solution Dyed Nylon					
Polfasermaterial	100% recyceltes Polyamid gargefärbt					
Composición Fibra	100% Poliamida reciclada tintada en masa					
Composition	100% Polyamide recyclé teint masse					
Poolmateriaal	100% Solution Dyed Gerecycled Polyamide					
Fibra	100% Poliamide tinta in massa riciclata					
Pile Yarn Weight / Poleinsatzgewicht / Peso Fibra /	1153 g/m ² ± 5%					
Poids de fibre / Poolinzetgewicht / Peso Felpa						
Total Weight / Gesamtgewicht / Peso Total / Poids total /	4715 g/m ² ± 5%					
Totaalgewicht / Peso Totale						
Pile Height / Polschichtdicke / Altura Fibra /	4.3 mm + 15% / - 10%					
Hauteur de la fibre / Poolhoogte / Altezza Felpa						
Total Thickness / Gesamtdicke / Espesor Total /	9.8 mm ± 0.5 mm					
Epaisseur totale / Totale dikte / Altezza Totale						
Gauge/Ends 10 cm / Teilung x 10 cm / Galga x 10 cm /	1/10 – 39.4					
Jauge-Rangs par 10 cm / Rijen per 10 cm / Serraggio x 10 cm						
Tufts per m² / Noppenzahl/m ² / Puntadas m ² / Densité du tuft par m ² /	145,336 ± 5%					
Aantal noppen per m ² / Densità Punti						
Backing Type / Rückenkonstruktion / Soporte /	CQuest™Bio					
Sous-couche / Ruguitvoering / Sottofondo						
Wear Classification / Beanspruchungsklasse / Clasificación al tráfico /	Heavy Contract (EN 1307)					
Classement d'usage et de confort /Gebruiksintensiteit / Resistenza all'usura	Class 33 / LC2					
Radiant Panel / Schwerentflammbarkeit / Clasificación Al Fuego /	(EN ISO 9239-1) Euroclass Bfl s1 (EN 13501-1)					
Classement feu / De Radiant Panel Test / Valutazione delle proprietà ignifughe						
Dimensional Stability / Dimensionsstabilität / Estabilidad Dimensional /	≤ 0.2% (EN 986)					
Stabilité dimensionnelle / Dimensionele stabiliteit / Test Stabilità dimensionale						
Impact Sound Insulation (ΔL_w) / Trittschallverbesserungsmaß /	25 dB (EN ISO 10140-3)					
Impacto Aislamiento Acústico / Réduction du bruit d'impact /						
Contactgeluid absorptie / Isolamento all'impatto acustico						
Rating of Sound Absorption / Gewichteter Schallabsorptionskoeffizient/	α _w 0.20 (EN ISO 11654)					
Clasificación de Absorción de Sonido / Coefficient d'absorption acoustique /						
Waarde geluidsabsorptie / Valutazione dell'assorbimento acustico						
Sound Absorption / Schallabsorptionsgrad / Absorción de Sonido /						
Absorption acoustique / Geluidsabsorptie / Assorbimento acustico						
125Hz 0.02	250Hz 0.03	500Hz 0.09	1000Hz 0.27	2000Hz 0.45	4000Hz 0.57	(EN ISO 354) α _s

Style 2526 3m² - 12 tiles per box (25 x 100 cm ± 0.2%)

 DOP: 1037/129773 EN 14041:2004 Notified Body - 0493 COC 0493 - CPR - 0181 For use as floor covering in buildings	 DOP: 1037/129773 EN 14041:2004 Approved Body - 0321 COC 0321/20664-02/E00-00 For use as floor covering in buildings	    ≥ 2.4	     
--	---	---	---

 **Carbon Neutral Floors™**
Learn more about our third-party verified Carbon Neutral Floors.
www.interface.com/carbonneutral

www.interface.com

Light Values

Product	Colour No	Colour Name	L Value*	Y Value*
Dry Bark	2529001	Desert Neutral	51.0	19.3
	2529002	Desert Sands	54.8	22.7
	2529003	Saltwater Neutral	54.0	22.0
	2529004	Saltwater Depth	55.4	23.3
	2529005	Rainforest Neutral	45.9	15.2
	2529006	Rainforest Canopy	47.9	16.7
	2529007	Freshwater Neutral	51.0	19.3
	2529008	Freshwater Gorge	50.1	18.5
	2529009	Spinifex Neutral	38.3	10.3
	2529010	Spinifex Grass	39.5	10.9
Escarpment	2525001	Desert Shrub	45.5	14.9
	2525002	Desert Sands	48.8	17.5
	2525003	Desert Neutral	53.9	21.8
	2525004	Saltwater Depth	28.3	5.6
	2525005	Saltwater Cliff	35.9	9.0
	2525006	Saltwater Neutral	55.5	23.4
	2525007	Rainforest Floor	55.1	23.0
	2525008	Rainforest Canopy	34.3	8.1
	2525009	Rainforest Neutral	49.4	18.0
	2525010	Freshwater Lomandra	42.3	12.7
	2525011	Freshwater Gorge	37.5	9.8
	2525012	Freshwater Neutral	53.0	21.0
	2525013	Spinifex Grass	48.5	17.2
	2525014	Spinifex Dirt	36.1	9.1
	2525015	Spinifex Neutral	38.8	10.5
Sandbank	2528001	Desert	52.9	20.9
	2528002	Saltwater	59.0	27.0
	2528003	Rainforest	52.3	20.4
	2528004	Freshwater	54.4	22.4
	2528005	Spinifex	41.5	12.2
Shallows	2527001	Desert	51.8	20.0
	2527002	Saltwater	54.8	22.8
	2527003	Rainforest	48.7	17.3
	2527004	Freshwater	51.4	19.7
	2527005	Spinifex	39.9	11.2
Undulating Water	2526001	Desert	54.2	22.2
	2526002	Saltwater	57.0	24.9
	2526003	Rainforest	54.6	22.5
	2526004	Freshwater	51.7	19.9
	2526005	Spinifex	43.3	13.4

* **Light Value:** L Value = L according to CIE L*a*b* colour space, Y Value = Light Reflectance Value according to BS 8493

Lichtreflexionswerte: L-Wert = L gemäß CIE L*a*b* Farbspektrum, Y-Wert = Lichtreflexionswert gemäß British Standard BS 8493

Valores de Reflectancia de Luz: Valor L = L según CIE L*a*b* espacio de color, Valor Y = Valor de reflectancia de luz según el estándar británico BS 8493

Valeurs concernant la lumière: Valeur L = L faisant référence à la méthode CIE L*a*b* pour la couleur, Valeur Y = Valeurs de réflectance de la lumière selon le British Standard BS 8493

Licht waarden: L Waarde = L volgens CIE L*a*b*kleurruimte, Y Waarde = Licht Reflectie Waarde volgens BS 8493

Indici di riflettanza alla luce: Indice L = L secondo CIE L*a*b* colour space, Indice Y = Indice di riflettanza alla luce secondo la norma BS 8493

EN Interface European Manufacturing BV reserves the right to change or modify specifications. Please see website for latest specifications. We have tried our very best to accurately represent product colours. However, due to the nature of printed materials, colour of actual products may vary slightly. Please request a sample to see actual product colour.

DE Interface European Manufacturing BV behält sich das Recht vor, Produktspezifikationen zu ändern oder entsprechend anzupassen. Die aktuellsten technischen Spezifikationen finden Sie auf unserer Website. Wir versuchen die Farben so naturgetreu wie möglich wiederzugeben. Farbabweichungen lassen sich jedoch nicht ausschließen. Bitte fordern Sie ein Muster an, um sich von der tatsächlichen Farbe zu überzeugen.

ES Interface European Manufacturing BV se reserva el derecho a modificar las especificaciones arriba referenciadas. Por favor, consulta nuestra web para ver las últimas especificaciones. Hemos intentado representar con la máxima precisión posible los Colores del producto. Sin embargo, debido a la naturaleza de los materiales impresos, el Color de los productos reales puede variar ligeramente. Por favor, solicita una muestra para ver el Colour real del producto.

FR Interface European Manufacturing BV se réserve la possibilité de modifier les caractéristiques ci-dessus. Les caractéristiques techniques à jour sont consultables sur le site internet. Les couleurs présentées se rapprochent au maximum des Coloris réels. Toutefois, les procédés d'impression des matériaux peuvent entraîner une légère variation du Coloris. Merci de demander un échantillon pour constater la couleur des produits.

NL Interface European Manufacturing BV behoudt zich het recht voor de specificaties te allen tijde aan te passen. Zie de website voor de nieuwste specificaties. Wij hebben getracht de productkleuren zo goed mogelijk te reproduceren. De kleuren van geprint materiaal kunnen echter altijd enigszins afwijken. Vraag altijd stalenmateriaal aan om de daadwerkelijke kleur te beoordelen.

SE Vi har gjort vårt bästa för att representera korrekta produktfärger. Emellertid, på grund av typen av tryckt material, kan färgen på faktiska produkter variera något. Beställ gärna ett prov för att se aktuell produktfärg.



Carbon Neutral Floors™

Europe, Middle East & Africa

AE	+971 44508175
AT	+43 1 8102839
BA	+387 33 522 534
BE	+32 2 475 27 27
BG	+359 2 808 303
BY	+375 17 226 75 14
CH	+41 44 913 68 00
CZ	+42 0 233 087 111
DE	+49 2151 3718 0
DK	+45 33 79 70 55
EE	+372 6518 313
ES	+34 932 418 750
EG	+(202) 3760 7818
FR	+33 1 58 10 20 20
GR	+30 211 2120820
HR	+385 14 62 30 63
HU	+36 1 349 6545
IE	+353 1 679 8466
IL	+972 97403034
IT	+39 02 890 93678
KZ	+7 701 391 88 13
LT	+370 37 337332
LV	+371 672 18 744
NL	+31 33 277 5555
ME	+381 11 414 92 00
MK	+389 2 323 01 89
NO	+47 23 12 01 70
PL	+48 22 862 48 40
PT	+351 217 122 740
RO	+40 21 317 12 40/42/43/44
RS	+381 11 414 92 00
SA	+966 554622263
SE	+468 241 230
SK	+421 911 104 073
SI	+386 8 205 4007
TR	+ 90 212 248 97 77
UA	+38(044)238 27 67
UK	+44 (0)800 3134465
ZA	+27 11 608 4270

